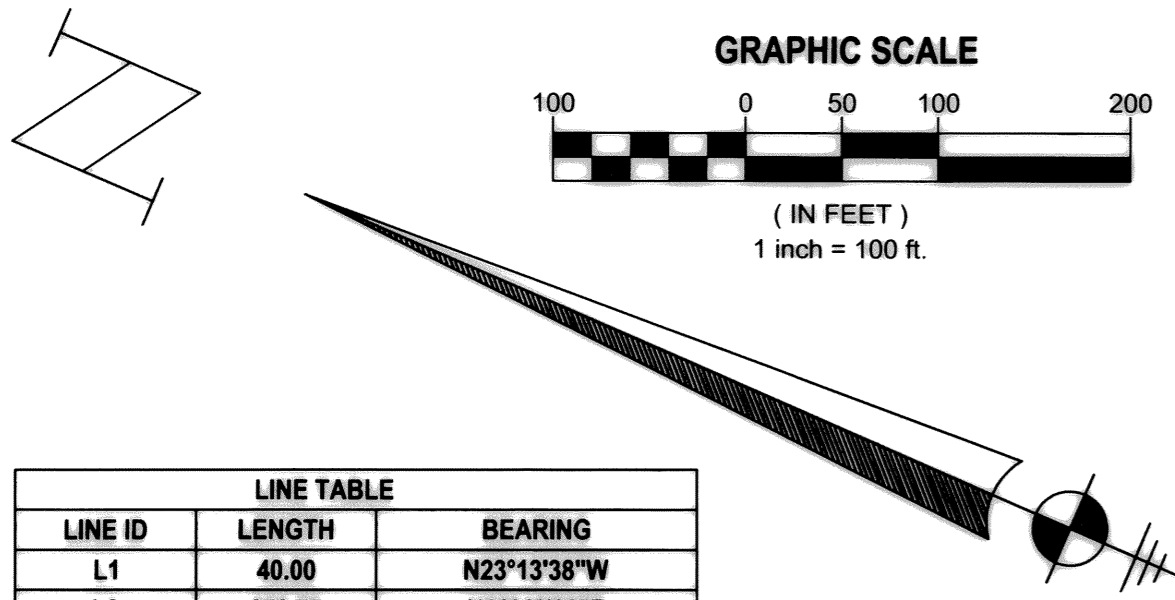


LEXINGTON LAKES

BEING A REPLAT OF THE WEST ONE-HALF OF LOT 13, LOT 14, THE WEST ONE-HALF OF LOT 15, LOTS 30,31,54 AND 55,
SEWALL'S POINT LAND COMPANY'S SUBDIVISION, AS RECORDED IN PLAT BOOK 3, PAGES 7 AND 8,
PUBLIC RECORDS OF MARTIN COUNTY, FLORIDA, AND BEING IN THE HANSON GRANT,
TOWNSHIP 38 SOUTH, RANGE 41 EAST, CITY OF STUART, MARTIN COUNTY, FLORIDA
SHEET 2 OF 2 APRIL, 2004

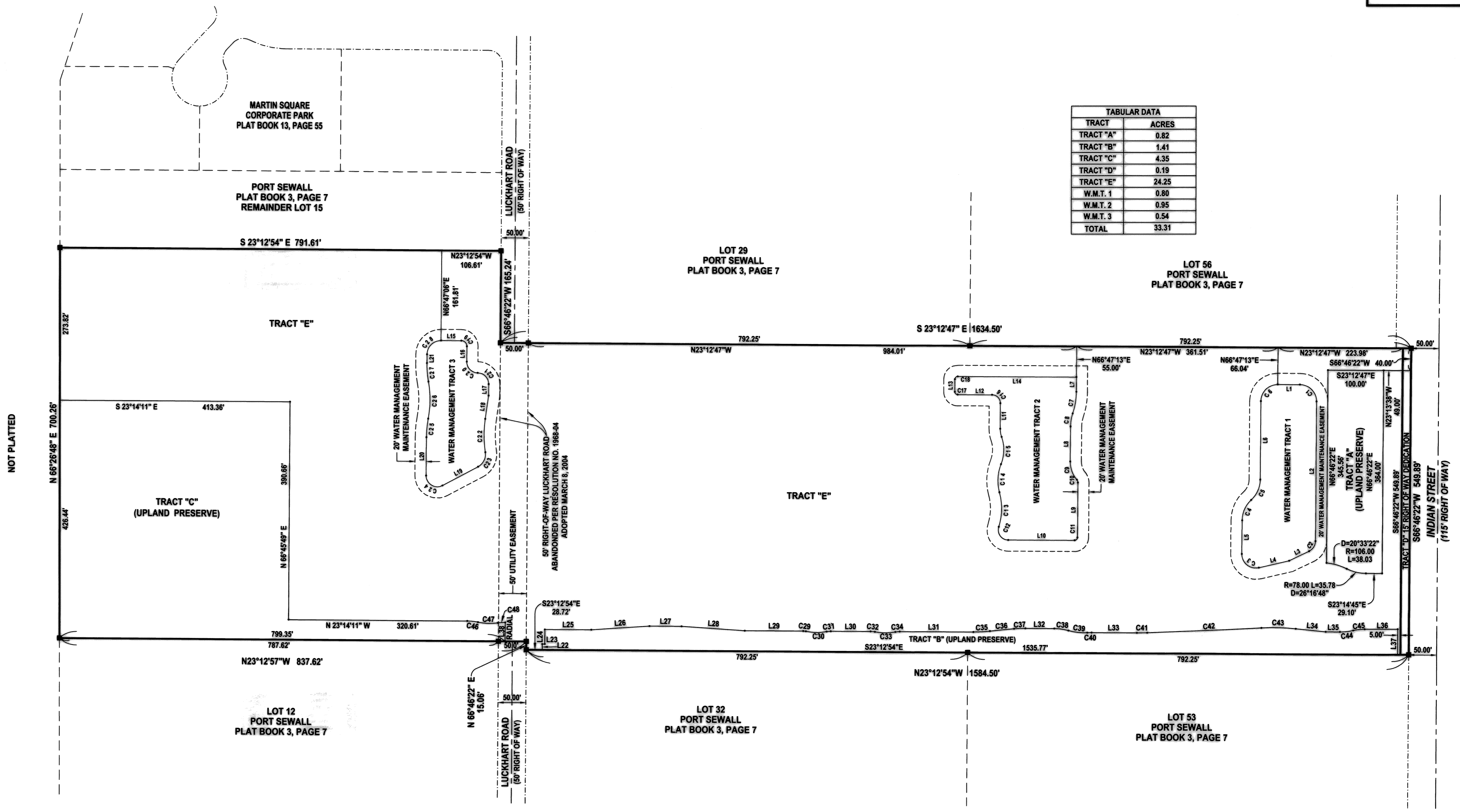
CLERK'S RECORDING CERTIFICATE
STATE OF FLORIDA
COUNTY OF MARTIN
I, MARSHA EWING, CLERK OF THE
CIRCUIT COURT OF MARTIN COUNTY,
FLORIDA, HEREBY CERTIFY THAT THIS
PLAT WAS FILED FOR RECORD IN
PLAT BOOK NO. 13 PAGE 82
MARTIN COUNTY PUBLIC RECORDS,
THIS 18TH DAY OF June, 2004
MARSHA EWING, CLERK
CIRCUIT COURT
MARTIN COUNTY, FLORIDA
BY: *Charlotte Smiley*
DEPUTY CLERK
125 9532
FILE NUMBER
SEAL



LINE ID	LENGTH	BEARING
L1	40.00	N23°13'38"W
L2	250.75	N66°46'22"E
L3	39.72	S48°59'56"E
L4	55.79	S36°25'35"E
L5	60.10	N66°46'22"E
L6	140.92	N66°46'22"E
L7	26.26	S66°46'22"W
L8	62.88	S66°46'22"W
L9	98.34	S66°46'22"W
L10	119.26	N23°13'38"W
L11	45.80	N66°46'22"E
L12	61.87	N23°13'38"W
L13	22.47	S66°46'22"W
L14	212.99	N23°13'38"W
L15	36.43	N23°13'38"W
L16	27.57	N66°46'22"E
L17	20.57	S66°46'22"W
L18	42.31	N74°39'33"E
L19	72.33	S51°25'35"E
L20	68.85	N66°46'22"E
L21	15.64	N66°46'22"E
L22	10.50	N66°47'06"E
L23	4.50	S23°13'35"E
L24	26.22	N66°46'25"E
L25	83.34	S23°12'54"E
L26	104.60	S27°14'40"E
L27	57.50	S23°12'54"E
L28	113.65	S19°34'21"E
L29	104.89	S23°12'54"E
L30	71.28	S23°13'17"E
L31	132.31	S23°11'41"E
L32	51.83	S23°13'37"E
L33	81.27	S23°12'54"E
L34	54.19	S17°33'05"E
L35	25.51	S23°13'35"E
L36	59.48	S23°26'51"E
L37	45.94	S66°46'22"W
L38	33.80	S67°25'21"W

CURVE ID	LENGTH	RADIUS	DELTA
C1	47.12	30.00	90°00'00"
C2	22.42	20.00	64°13'42"
C3	45.03	25.00	103°11'57"
C4	41.21	50.00	47°13'36"
C5	41.21	50.00	47°13'36"
C6	47.12	30.00	90°00'00"
C7	39.70	125.00	18°11'42"
C8	23.82	75.00	18°11'42"
C9	35.48	50.00	40°39'26"
C10	5.88	8.00	40°39'26"
C11	7.85	5.00	90°00'00"
C12	33.67	18.00	107°10'40"
C13	62.90	110.00	32°45'46"
C14	51.34	80.00	36°46'17"
C15	50.15	70.00	41°02'43"
C16	23.56	15.00	90°00'00"
C17	7.85	5.00	90°00'00"
C18	7.85	5.00	90°00'00"
C19	15.71	10.00	90°00'00"
C20	31.26	20.00	89°33'42"
C21	31.26	20.00	89°33'42"
C22	59.97	200.00	17°10'44"
C23	31.02	25.00	71°05'36"
C24	41.26	20.00	118°11'57"
C25	33.41	185.00	10°20'54"
C26	66.83	185.00	20°41'49"
C27	33.41	185.00	10°20'54"
C28	39.27	25.00	90°00'00"
C29	4.73	25.00	10°50'08"
C30	37.51	102.00	21°04'11"
C31	7.68	43.00	10°13'40"
C32	7.80	43.00	10°23'52"
C33	37.04	102.00	20°48'24"
C34	7.83	43.00	10°26'08"
C35	29.81	245.00	06°58'20"
C36	43.60	1090.00	02°17'30"
C37	20.28	250.00	04°38'54"
C38	25.74	93.00	15°51'35"
C39	34.33	103.20	19°03'44"
C40	7.74	138.00	03°12'52"
C41	18.42	500.00	02°06'40"
C42	205.49	8801.68	01°20'16"
C43	61.63	387.50	09°06'44"
C44	24.18	107.00	12°56'51"
C45	20.66	93.00	12°43'35"
C46	19.37	93.00	11°56'11"
C47	35.65	101.30	20°09'48"
C48	13.49	87.00	08°53'09"

TRACT	ACRES
TRACT "A"	0.82
TRACT "B"	1.41
TRACT "C"	4.35
TRACT "D"	0.19
TRACT "E"	24.25
W.M.T. 1	0.80
W.M.T. 2	0.95
W.M.T. 3	0.54
TOTAL	33.31



LIDBERG LAND SURVEYING, INC.
675 West Indiantown Road, Suite 200,
Jupiter, Florida 33458 TEL 561-746-8454

CAD K:\AUTOCAD2000\02-199\DWG\02-199-306.DWG			
REF K:\AUTOCAD2000\02-199\DWG\02-199-101.DWG			
FLD	FB.	PC.	JOB 02-199 (306)
OFF S.F.B.			DATE 07/16/03
CKD D.C.L.	SHEET 2	OF 2	DWG D02-199P